

Capacity is listed as instant reference and depends on operation conditions.

## SLIDE-OFF AIR NIPPER BRACKET-TYPE

## NB Series

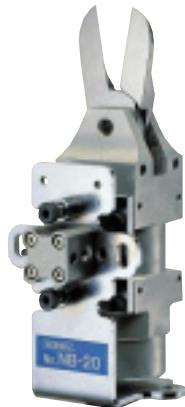
### Slide-off Type (Large)

It can be attached to the plastic molding take-out machine or used for the gate cutting device, thereby enabling labor-saving.



GT-NB20LW-10TM

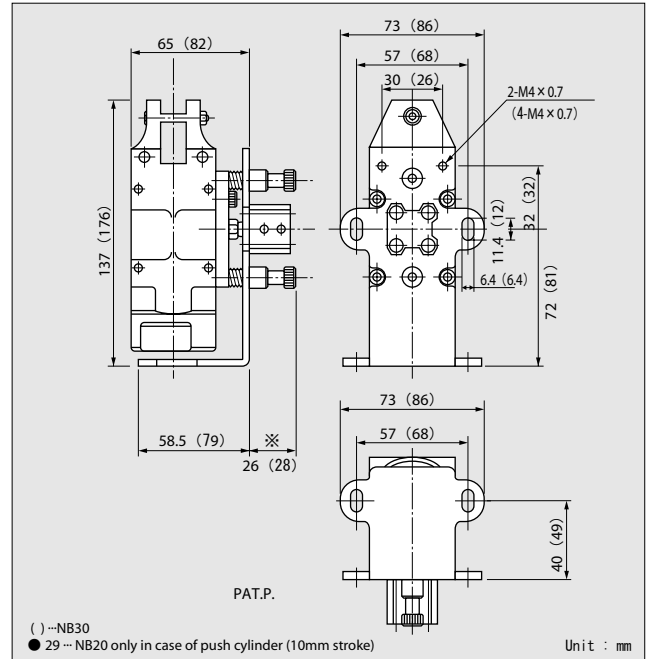
Accurate slide function with slide stroke adjusting to 0-10mm



GT-NB20

EDP No.	Model No.
360070-101	GT-NB20LW-10TM
360073	GT-NB20(5-PUSH)
360071	GT-NB20(5-PULL)
360072	GT-NB20(10-PULL)
360076	GT-NB30(10-PULL)

These brackets are optional and for details. Please consult with us. Blade is optional.



## HEAT AIR NIPPER

## NTH/NKH Series

Gate cutting of fiber glass plastic and hard plastic without whitening/crack.

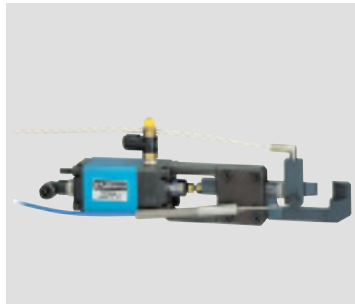
To precision finish the material without crack in the cutting.

- \* Blade opening can be adjusted optionally.
- \* NKH is of thrust-cut type, suitable for cutting of film gate.
- \* Blade is teflon coated, allowing easy removal of works.

For Heat Nipper, we accept the special specifications according to the situation of users' use. For more detail, please consult with us.



GT-NTH05 Sliding vertical type



GT-NKH10 Thrust-cut type (Double action cylinder type)



GT-NKH20-25 or GT-NKH20R-25 (Reversed Blade) Thrust-cut type (Air-hydro type)

EDP No.	Model No.	Cutting capacity ABS φ mm	Heater Temperature Max. °C / °F	Weight g	Air consumption cm <sup>3</sup> /Stroke	Working Air Pressure MPa / psi	Stroke
360635	GT-NTH05	2.5	200 392	325	47	0.4-0.5 57-71	Side stroke 0~3mm
360636	GT-NTH10	3.5	200 392	515	82	0.4-0.5 57-71	Side stroke 0~3mm
360643	GT-NKH10	1.5 thickness 7 width	200 392	715	73	0.5-0.6 57-71	Piston stroke 12mm
360093/360094	GT-NKH20-25/20R-25	1.5 thickness 7 width	180 356	720	60	0.6 85	Piston stroke 10mm

\* Air hose bore diameter...4mm(2mm for GT-NTH05) \* Cutting speed...4-5 sec./str.

Standard set detail \* Main body \* Blade \* Heat bar \* Sensor \* Throttle valve

Blade

Part No.	Material	Shape	Weight g	Blade opening mm	Cutting blade Effective L. mm
For GT-NTH05	Special Alloy Steel	For plastic	70	3.5	15
For GT-NTH10	Special Alloy Steel	For plastic	114	4.5	17
For GT-NKH10	Special Alloy Steel	For plastic(knife type)	136	12	10
For GT-NKH20	Special Alloy Steel	For plastic(knife type)	125	10	20

NTH type blade weight dose not include heater and sensor.

CAUTION ! Shut off the air supply before blade mount/dismount.

- OP Option Parts
- \* Hydro-converter(NKH20)
  - \* Temperature controller
  - \* Solenoid valve \* Relay
  - \* Relay socket \* Switch \* Joint